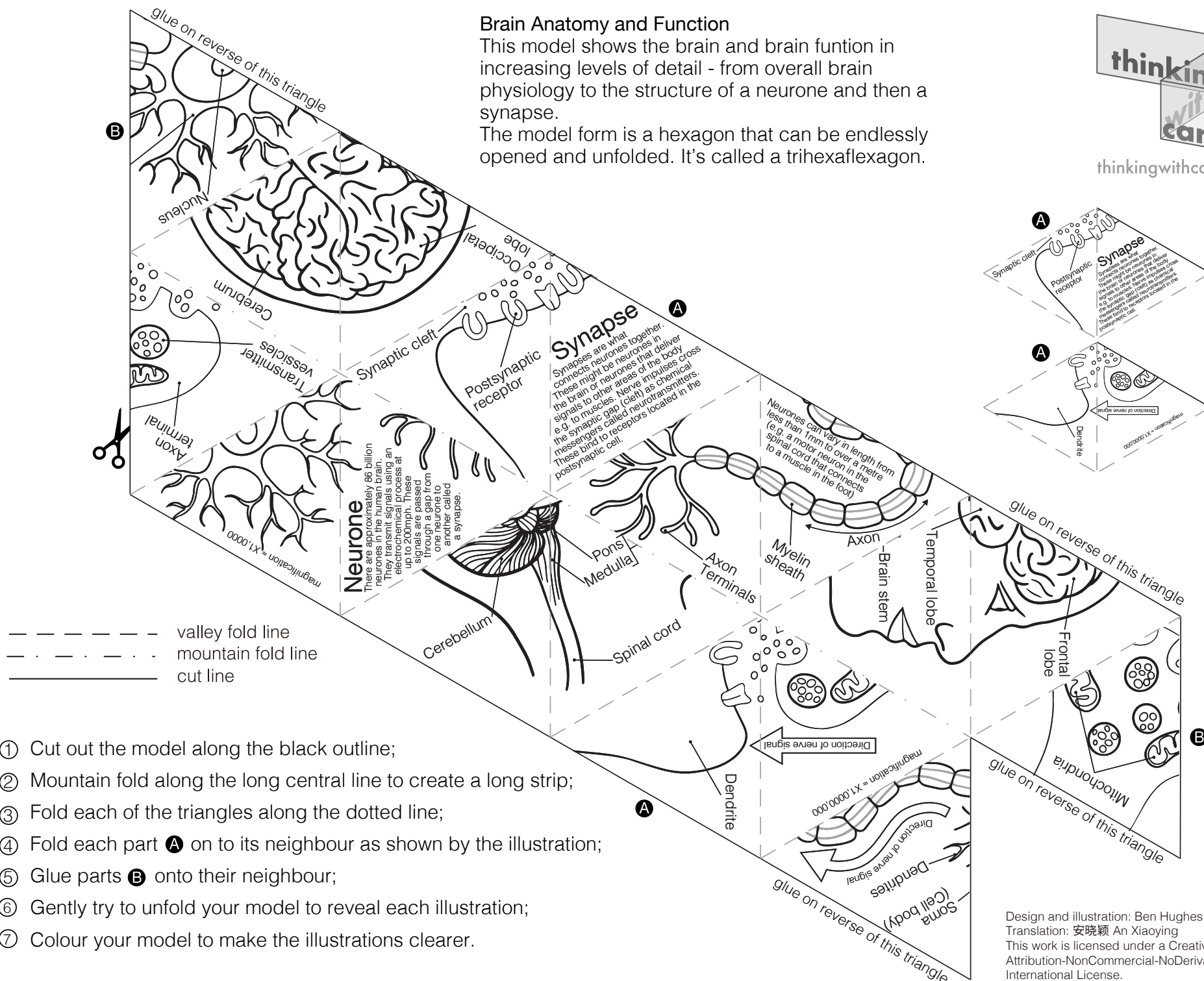


## Brain Anatomy and Function

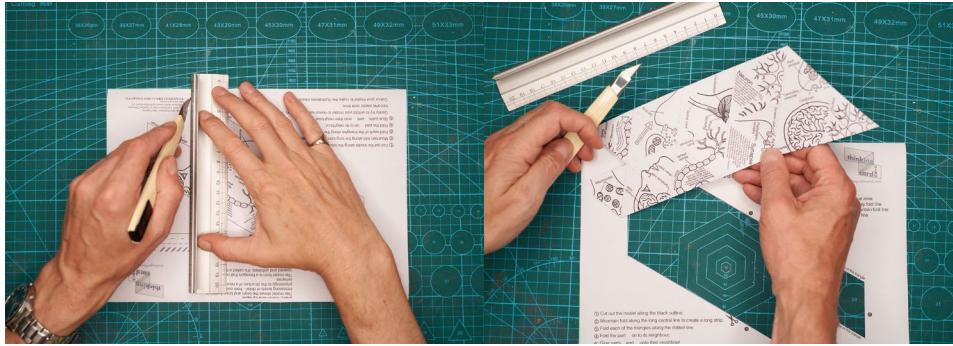
This model shows the brain and brain function in increasing levels of detail - from overall brain physiology to the structure of a neurone and then a synapse.

The model form is a hexagon that can be endlessly opened and unfolded. It's called a trihexaflexagon.



- ① Cut out the model along the black outline;
- ② Mountain fold along the long central line to create a long strip;
- ③ Fold each of the triangles along the dotted line;
- ④ Fold each part **A** on to its neighbour as shown by the illustration;
- ⑤ Glue parts **B** onto their neighbour;
- ⑥ Gently try to unfold your model to reveal each illustration;
- ⑦ Colour your model to make the illustrations clearer.

①



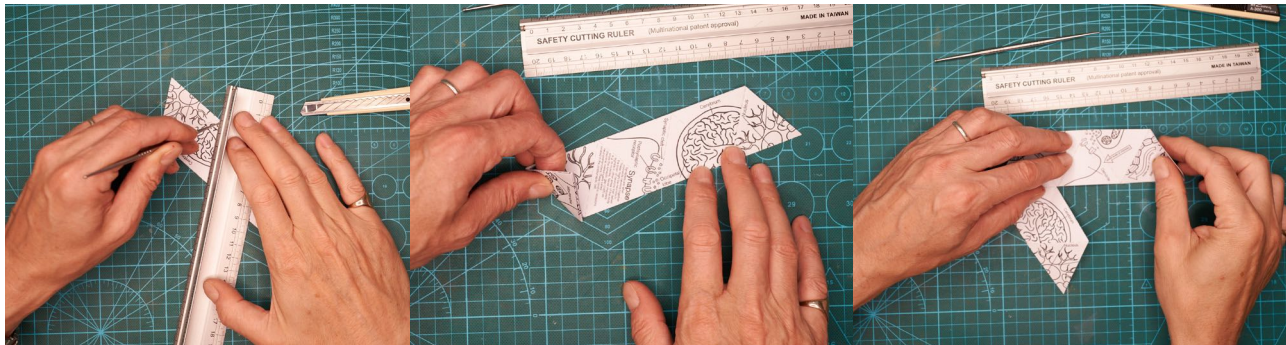
②



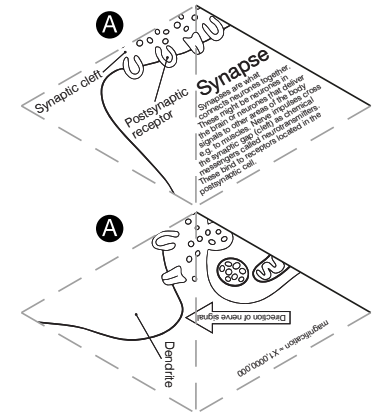
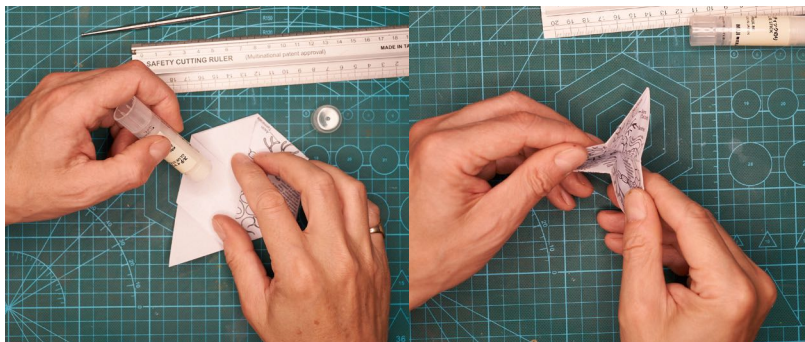
- ① Cut out the model along the black outline;
- ② Mountain fold along the long central line to create a long strip;
- ③ Fold each of the triangles along the dotted line;
- ④ Fold each part **A** on to its neighbour as shown by the illustration;
- ⑤ Glue parts **B** onto their neighbour;
- ⑥ Gently try to unfold your model to reveal each illustration;
- ⑦ Colour your model to make the illustrations clearer.

③

④



⑤



Design and illustration: Ben Hughes.  
 This work is licensed under a Creative Commons  
 Attribution-NonCommercial-NoDerivatives 4.0  
 International License.  
 本作品采用知识共享署名 4.0 国际许可协议进行许可。

